

1st EDITION 28/02/2018

FERRIES TO SARDINIA, CORSICA, ISLE OF ELBA, SICILY, TREMITI, MALTA

Timetables 2018



tirrenia
Compagnia Italiana di Navigazione



ONORATO ARMATORI. LEADING IN ITALIAN TRANSPORT ON THE SEA - SINCE FIVE GENERATIONS.

Onorato Armatori, a market leader in maritime transport for passengers and goods, is the parent company of the following companies:

- Moby
- Tirrenia-CIN
- Toremar
- St. Peter Line

The group has its roots in the year 1880 and is under the leadership of five generations of ship owners and has become one of the most important companies in the world of passenger traffic and RO-RO goods transport. The strong identification of this protagonist with regard to Italian maritime transport is still reflected today in the choice of staff, that consists exclusively of Italians.

ITALIAN PRIDE IN THE MEDITERRANEAN SEA... AND BEYOND

Present in Italy, France and Malta Onorato Armatori secures the connections to Sardinia, Sicily, Corsica, Elba, the Tuscan Archipelago, the Tremiti Islands and Malta. With MOBY SPL the group is also active in the Baltic Sea. Since June 2016, Nice-Bastia is new in the route plan, so there is a connection between two foreign ports. The group's commitment to the French market is so great that 1,200 scheduled departures are

planned in 2018 to meet a variety of customer needs and requests.

TAILOR-MADE JOURNEYS

The fleet of the group is characterized by the quality of their FAST CRUISE ships, because of the variety of services and comfort which belongs to the best in the world. Travelling by ship with the Group Onorato Armatori means travelling in a pleasant, relaxed and fun environment with à la carte restaurants, pizzerias, arcades, cinemas, shopping areas, swimming pools with sundeck, and the Children's World. This makes each trip a unique and special experience.

BOOK AS YOU PREFER

An incredible selection of lines, comfortable and fun ships suitable for every budget, services of every kind, even for the more demanding customer: a world of professionalism on sea, for your vacation that is easy to book. Onorato Armatori S.p.A. has sales offices throughout the territory, a network of over 25,000 agencies, travel agencies and tour operators in Italy, Europe and worldwide. In addition, everything can be found on our company websites. A simple click is enough and you can always buy your ticket for your dream holiday.



5.000
ITALIAN
EMPLOYEES



47
SHIPS



33
PORTS



40.000
PASSAGES



Getting onto a Moby ship means to be on vacation already!

The ambience, the excellent cuisine, the public areas are for fun and relaxation. All this to ensure that the families and vacationers experience only the best.

This is certified through prestigious awards: for the fourth year in a row, Moby has been awarded the Gold Seal of Quality and Comfort in 2017-2018 and has received the Green Star for both flagships. At the Italy Travel Awards Moby was voted Best Passenger Shipping Company 2017.

As the first in the world, the sides of the ships were decorated with The Warner Bros. "Looney Tunes" and are still present in and on the ships today.



SARDINIA

Genoa - Olbia
Livorno - Olbia
Piombino - Olbia

CORSICA

Nice - Bastia
Genoa - Bastia
Livorno - Bastia
Santa Teresa di Gallura (Sardinia) - Bonifacio

ISLE OF ELBA

Piombino - Portoferraio
Piombino - Cavo



Toremar, Tuscany Regione Marittima, is connecting the islands of the Tuscan Archipelago since 1976 and has become part of the group Onorato Armatori in 2012.

The first SmartFleet of the world is a pioneer for its technological innovations. The reference company of the Tuscan archipelago is famous for its nearly 100% punctuality and is characterized by the hospitality on its ships.



TUSCANY

Piombino - Portoferraio
Piombino - Cavo
Piombino - Rio Marina
Piombino - Pianosa
Rio Marina - Pianosa
P. S. Stefano - Giglio
Livorno - Capraia



Tirrenia-CIN, already active since 1936, became part of Group Onorato Armatori in 2015.

As one of the most important European Ship operators, the company has one of the most modern fleets of the Mediterranean Sea and offers its customers the best service with high quality standards.

This includes a menu with delicacies of traditional and regional cuisine and the largest children's play areas in the Mediterranean. Tirrenia-CIN employs 100% Italian employees.



SARDINIA

Civitavecchia - Olbia
Civitavecchia - Cagliari
Genoa - Olbia
Genoa - Porto Torres
Genoa - Arbatax
Civitavecchia - Arbatax
Naples - Cagliari

TREMITI

Termoli - Tremiti

MALTA

Catania - Malta

SICILY

Cagliari - Palermo
Naples - Palermo



SARDINIA, CORSICA, ISLE OF ELBA, SICILY, TREMITI AND MALTA, WHENEVER AND HOWEVER YOU WANT. THOUSANDS OF DEPARTURES AT CHOICE.

THE FLEET TO SARDINIA

MOBY AKI



MOBY WONDER



MOBY DREA



MOBY OTTA



SHARDEN



NURAGES



MOBY TOMMY



BITHIA AND JANAS



NEW 2018

ATHARA



NEW 2018

MOBY DADA



THE FLEET TO CORSICA AND SICILY

MOBY VINCENT



MOBY CORSE



MOBY ZAZÀ



MOBY KISS



FLORIO AND RUBATTINO



DEPARTURES FROM S. TERESA DI CALLURA TO BONIFACIO AND V.V.

M/N GIRAGLIA AND BASTIA

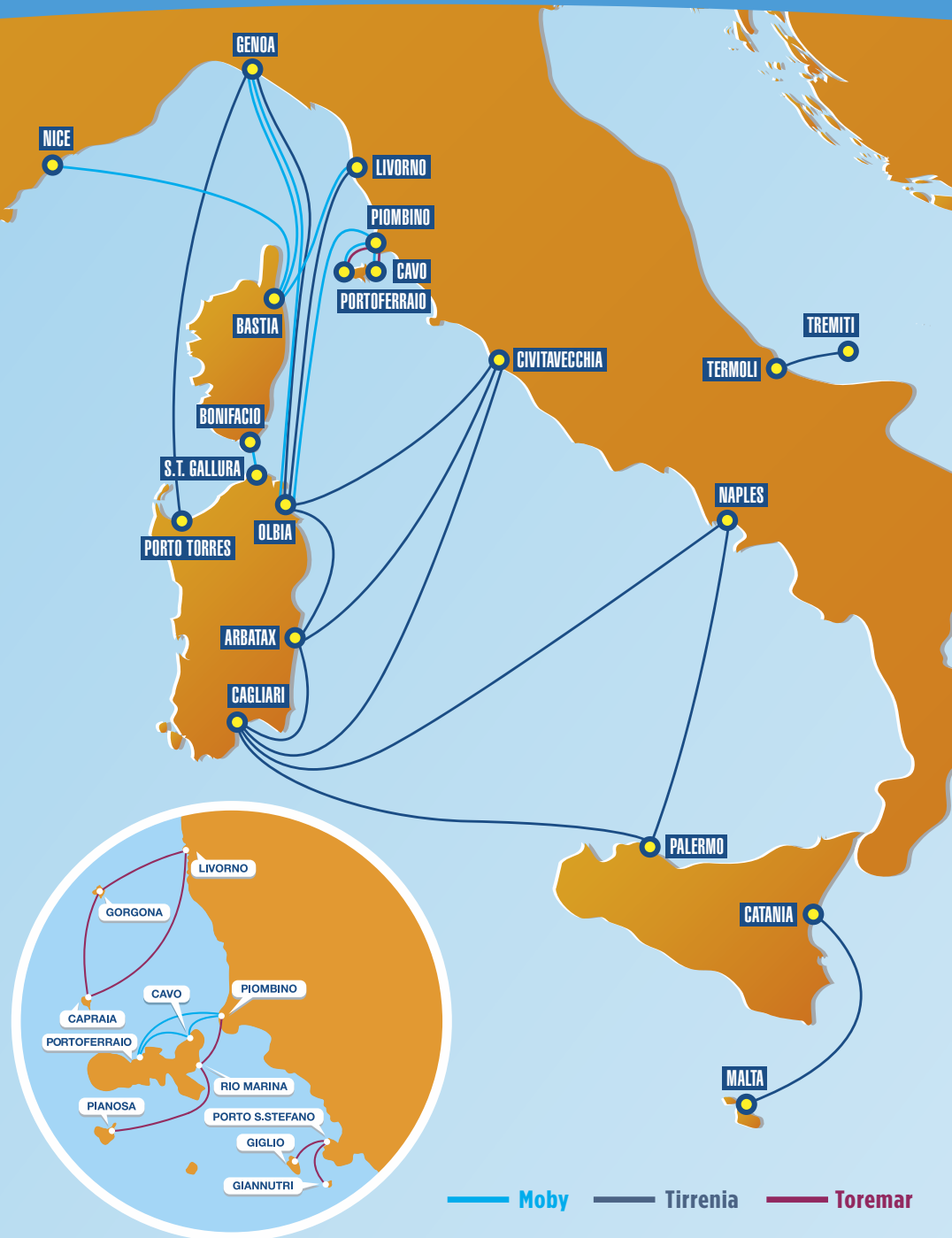


THE FLEET TO ISLE OF ELBA, ISLE OF GIGLIO AND TUSCAN ARCHIPELAGO



SERVICES ON BOARD

SHIP	CABINS	CINEMA	RESTAURANTS	SELF SERVICE	BAR	CHILDREN'S PLAY AREA	SHOP	SKY TV	AIR CONDITIONING	COACH SEATS	KENNELS FOR DOMESTIC PETS	SWIMMING POOL	STABILIZERS	WIFI (CHARGES APPLY)
MOBY AKI	✓	-	✓	✓	✓	✓	✓	✓	✓	✓	✓	✓	✓	✓
MOBY WONDER	✓	-	✓	✓	✓	✓	✓	✓	✓	✓	✓	✓	✓	✓
MOBY TOMMY	✓	-	✓	✓	✓	✓	✓	✓	✓	✓	✓	✓	✓	✓
MOBY OTTA	✓	-	✓	✓	✓	✓	✓	✓	✓	✓	✓	✓	✓	✓
MOBY DREA	✓	-	✓	✓	✓	✓	✓	✓	✓	✓	✓	✓	✓	✓
NURACHES	✓	✓	✓	✓	✓	✓	✓	✓	✓	✓	✓	-	✓	✓
SHARDEN	✓	✓	✓	✓	✓	✓	✓	✓	✓	✓	✓	-	✓	✓
BITHIA	✓	✓	✓	✓	✓	✓	✓	✓	✓	✓	✓	-	✓	✓
JANAS	✓	✓	✓	✓	✓	✓	✓	✓	✓	✓	✓	-	✓	✓
ATHARA	✓	✓	✓	✓	✓	✓	✓	✓	✓	✓	✓	-	✓	✓
FLORIO	✓	✓	✓	✓	✓	✓	✓	✓	✓	✓	✓	-	✓	✓
RUBATTINO	✓	✓	✓	✓	✓	✓	✓	✓	✓	✓	✓	-	✓	✓
MOBY VINCENT	✓	-	✓	✓	✓	✓	✓	✓	✓	✓	✓	-	✓	✓
MOBY DADA	✓	-	✓	✓	✓	✓	✓	✓	✓	✓	✓	-	✓	✓
MOBY CORSE	✓	-	✓	✓	✓	✓	✓	✓	✓	✓	✓	-	✓	✓
MOBY ZAZÀ	✓	-	✓	✓	✓	✓	✓	✓	✓	✓	✓	-	✓	✓
MOBY KISS	-	-	✓	✓	✓	✓	-	✓	✓	✓	✓	-	✓	✓
BASTIA	-	-	✓	✓	✓	-	-	✓	✓	-	-	✓	-	✓
CIRAGLIA	-	-	✓	✓	✓	-	-	✓	✓	-	-	✓	-	✓
MOBY ALE AND MOBY BABY TWO	-	-	✓	✓	✓	✓	✓	-	✓	-	-	-	✓	✓
MOBY NIKI	-	-	✓	✓	✓	✓	-	✓	✓	-	-	✓	✓	✓
STELIO MONTOMOLI	-	-	✓	✓	✓	✓	-	✓	✓	-	-	-	✓	✓
MARMORICA AND OGLASA	-	-	✓	✓	✓	✓	-	✓	✓	-	-	-	✓	✓
LIBURNA	-	-	✓	✓	✓	✓	-	✓	✓	-	-	-	✓	✓
RIO MARINA BELLA	-	-	✓	✓	✓	✓	-	✓	✓	-	-	-	✓	✓
GIOVANNI BELLINI	-	-	✓	✓	✓	✓	-	✓	✓	-	-	-	✓	✓



YOU FIND THE SCHEDULE AND THE DAILY RATES ON OUR HOMEPAGE
www.moby.com www.tirrenia.de www.toremar.de

TICKETS

Here is an explanation of the ticket types of **MOBY, Tirrenia-, Toremar:**

- The **E-mail Ticket** is sent per electronic message, for example immediately after an internet booking. It must (together with the general terms of transport) be printed out. All booking contents, the ticket number and the authorization code* are legible.
- The **Print Ticket** is issued by our agencies and contains all booking details, the ticket number and the authorization code*.

- The **SMS-ticket (e-ticket)** will be sent for very short time bookings (impossible for Isle of Elba and the route between Sardinia and Corsica). Hereby you get a SMS onto your mobile phone with indication of ticket number, booking reference number and the authorization code*.

Important: E-Mail tickets and Print Tickets are valid only together with a ticket cover or printed general terms of transport.

* The authorization code (Tirrenia = control code) is, among other, necessary for re-booking.

THE EMBARKATION

Before embarkation please submit the ticket to our staff at check-in in the place in front of the ship. We remind that for passengers with vehicles this has to happen **90 min. (Moby) - 120 min. (Tirrenia) - 60 Min (Toremar)** before departure and for passengers by foot 30 min. before departure. If this is not respected the booking can be declined and embarkation cannot be warranted.

During the ships idle time in the port a security distance of 50 m to the ship has to be obeyed. The embarkation of the vehicles does not follow the chronologically order of the arrival time in the port office but is coordinated by the captain of the respective ship and his staff (as well with regard to the allocation of parking spaces on the respective deck). The vehicles are driven into the ship only by the driver, fellow travellers enter the ship by passenger entrances. The vehicle decks get closed after departure and an access to the vehicle is prohibited.

CAMPING ON BOARD

Try Camping on Board in your campervan or caravan and take advantage of all the on-board services. In addition, your pets can travel with you and if you want, they can remain on the vehicle.

YOU FIND THE DEPARTURES
 ON OUR WEBSITE
www.moby.com

Rules for the permitted stay in your own camping car or caravan during the crossing of the boat.

- In the area "Camping on Board", only diesel vehicles are permitted.
- It is forbidden to use gas bottles and cooking is not allowed inside the vehicle.

- Based on safety regulations and maritime law, the captain may deny access to the camping deck in adverse weather conditions and may demand that the passengers stay in the indoor area of the ship. Possibly requested cabins will be charged.
- The shipping company is not liable for damages, which occur during the stay in the camper or trailers.
- There is no possibility to connect vehicle for electricity or water.



TRAVEL WITH MOBY AND TIRRENIA

A SEA FULL OF SERVICES

MOBY AKI AND MOBY WONDER

RECREATE YOURSELF

and enjoy the visit to our à la carte Restaurant for 200 persons or the self service restaurant Mascalone Latino. Stroll over our special deck with shopping center, bars, Cafeteria, snack bar, pizza point and ice cream shop.

Additionally the comfortable cabins round up the offer.

A BIT ENTERTAINMENT

makes happy. MOBY shortens the voyage with over 3 decks including show lounges totaling over 700 seats with bars, snack bars, pizza point, sports bar with panorama view, with jumbo screen TV, with pool and sun deck.

Additionally for the children fun playgrounds with the Looney Tunes decoration and video films are always a highlight.

What a beautiful start to a holiday with MOBY.

A CHILDREN'S WORLD

The voyage with MOBY is a jump into the world of fantasy, your children will be enthusiastic.

There are playgrounds, children's videos and lots of things with Looney Tunes to make your stay on board fun.

Don't miss the opportunity to let your children eat with Wiley Coyote or Bugs Bunny. On your way on board pay attention to the figures that are to be found here and there.

Your children will experience a voyage by MOBY as if in a dream. Keep your eyes wide open as you walk on board, or you will miss the best in the end.

FOUR LEGGED FRIENDS

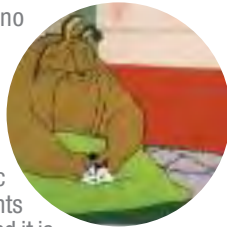
Book a respective cabin for you and your pet. You can take up to 3 pets with you into a cabin without a limit for the size of the animals.

If you don't find the type of cabin with the note "animals permitted", this means that on this

departure pet cabins are no longer available.

The access for pets into cabins is then not permitted.

Animals generally may not be taken with into public areas, bars and restaurants and the coach seat areas and it is prohibited to leave animals within the vehicle: they can stay on the outdoor deck or, if available, use a dog box.



DINNING ENJOYMENT



For every taste: each moment on board of the MOBY ships are directed for your recreation and enjoyment. Take a break with a cocktail, take your meal with the "Looney Tunes" animated characters. Simply choose your place in your preferred area. Meals may

be reserved in advance.



ON BOARD OF THE MOBY SHIPS YOU WILL FIND ALL YOU WISH FOR AND WHAT MAKES YOUR CROSSING AN EXTRAORDINARY ADVENTURE.

SKY ON THESE SHIPS OUR GUESTS ARE ABLE TO WATCH SKY TV: MOBY AKI, MOBY WONDER, MOBY CORSE, MOBY TOMMY, MOBY OTTA, MOBY DREA, MOBY VINCENT AND MOBY ZAZÀ.

OUR OFFERS ON BOARD

CHILDREN'S AREA

For the pleasure of our little guests and the ease of Mum and Dad we created a space specifically for children on our Tirrenia-ships where they can play and act entirely free.

SHOPPING

Tirrenia offers new shopping areas with elegant board boutiques distinguished by quality and variety, in which you can purchase your favorite magazine, numerous and interesting books, gadgets, souvenirs, toys for your children, basic needs, local products out of the region joined by Tirrenia, handcrafts, technological products and a lot more.

CINEMA AND SATELLITE TV

On board of the Tirrenian ships there is a completely new way of cinema that has been introduced thanks to a contract with Warner Bros. where movies can be screened 90 days after premiere. The satellite TV introduced on all passenger ships of the Tirrenia fleet, as in public areas as in suites, enables you to watch the fascinating TV programs during the crossing.

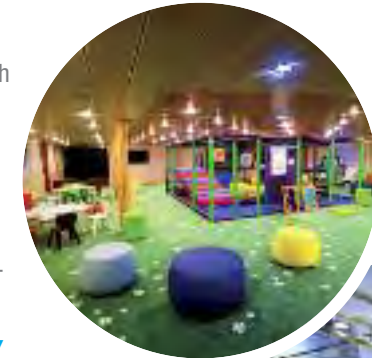
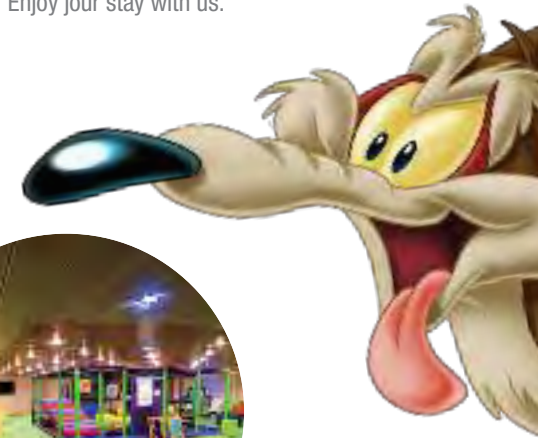
A LA CARTE RESTAURANT

Each day you can select tasteful dishes whereby the cooks have been inspired by the Mediterranean tradition. In our restaurants we offer you the best quality and service to put you into the mood for a wonderful vacation.

SELF SERVICE RESTAURANT

In the self service area, there are lots of healthy dishes, a rich offer of menus for children and particularly quality and fresh-

ness, always for the right price, at your choice. Enjoy your stay with us.



DEPARTURES SARDINIA-SICILY

LEAVING CAGLIARI-PALERMO

Month	Dep.	Arr.	1	2	3	4	5	6	7	8	9	10	11	12	13	14	15	16	17	18	19	20	21	22	23	24	25	26	27	28	29	30	31
MARCH 2018	19.30	08.30																															
APRIL	19.30	08.30																															
MAY	19.30	08.30																															
JUNE	19.30	07.30																															
JULY	10.30	22.30																															
JULY	19.30	07.30																															
AUGUST	10.30	22.30																															
AUGUST	19.30	07.30																															
SEPTEMBER	10.30	22.30																															
SEPTEMBER	19.30	07.30																															
OCTOBER	19.30	07.30																															
NOVEMBER	19.30	08.30																															
DECEMBER	19.30	08.30																															

RETURN PALERMO-CAGLIARI

Month	Dep.	Arr.	1	2	3	4	5	6	7	8	9	10	11	12	13	14	15	16	17	18	19	20	21	22	23	24	25	26	27	28	29	30	31
MARCH 2018	19.30	08.30																															
APRIL	19.30	08.30																															
MAY	19.30	08.30																															
JUNE	19.30	07.30																															
JULY	19.30	07.30																															
JULY	23.59	12.00																															
AUGUST	19.30	07.30																															
AUGUST	23.59	12.00																															
SEPTEMBER	19.30	07.30																															
SEPTEMBER	23.59	12.00																															
OCTOBER	19.30	07.30																															
NOVEMBER	19.30	08.30																															
DECEMBER	19.30	08.30																															

■ DEPARTURE □ NO DEPARTURE
 SUBJECT TO CHANGE. YOU WILL FIND THE CURRENT TIMETABLE AND FARES ON OUR WEBSITE www.tirrenia.de

DEPARTURES TO/FROM SICILY

ITAL. MAINLAND - SICILY 2018

LEAVING NAPLES-PALERMO

Month	Dep.	Arr.	1	2	3	4	5	6	7	8	9	10	11	12	13	14	15	16	17	18	19	20	21	22	23	24	25	26	27	28	29	30	31
MARCH	20.15	06.30																															
APRIL	20.15	06.30																															
MAY	20.15	06.30																															
JUNE	20.15	06.30																															
JULY	20.15	06.30																															
AUGUST	20.15	06.30																															
SEPTEMBER	20.15	06.30																															
OCTOBER	20.15	06.30																															
NOVEMBER	20.15	06.30																															
DECEMBER	20.15	06.30																															

RETURN PALERMO-NAPLES

Month	Dep.	Arr.	1	2	3	4	5	6	7	8	9	10	11	12	13	14	15	16	17	18	19	20	21	22	23	24	25	26	27	28	29	30	31
MARCH	20.15	06.30																															
APRIL	20.15	06.30																															
MAY	20.15	06.30																															
JUNE	20.15	06.30																															
JULY	20.15	06.30																															
AUGUST	20.15	06.30																															
SEPTEMBER	20.15	06.30																															
OCTOBER	20.15	06.30																															
NOVEMBER	20.15	06.30																															
DECEMBER	20.15	06.30																															

■ DEPARTURE □ NO DEPARTURE
 SUBJECT TO CHANGE. YOU WILL FIND THE CURRENT TIMETABLE AND FARES ON OUR WEBSITE www.tirrenia.de

CATANIA-MALTA DEPARTURES

ALL YEAR ROUND - For timetables and prices visit our website www.tirrenia.de

CORSICA-SARDINIA-CORSICA DEPARTURES

From **02.01.2018** to **28.03.2018** and from **01.10.2018** to **31.12.2018**
Bonifacio - Santa Teresa di Gallura Santa Teresa di Gallura - Bonifacio
Monday to Friday: 08.30 - 13.00 - 18.30 **Monday to Friday: 07.00 - 11.00 - 17.00**
Saturday and Sunday: 10.30 - 18.30 **Saturday and Sunday: 09.00 - 17.00**

From **29.03.2018** to **30.09.2018**
Bonifacio - Santa Teresa di Gallura Santa Teresa di Gallura - Bonifacio
Everyday: 08.30 - 12.00 - 17.00 - 20.00 **Everyday: 07.00 - 10.00 - 15.00 - 18.30**
 (Passage time: approx. 1 hour) - SUBJECT TO CHANGE. YOU WILL FIND THE CURRENT TIMETABLES AND FARES ON OUR WEBSITE www.moby.com

TERMOLI-TREMITI PASSAGES

ALL YEAR ROUND - Departures several times a day (passage time: approx. 1 hour)
 SUBJECT TO CHANGE. YOU WILL FIND THE CURRENT TIMETABLE AND FARES ON OUR WEBSITE www.tirrenia.de

ELBA and the islands of the TUSCAN ARCHIPELAGO



By the takeover of Toremar into the MOBY family in the year 2012, the connections with the island of Elba were multiplied, and ferry crossings are offered to the islands of the Tuscan Archipelago with the highest quality standard. The ships of Moby and Toremar guarantee comfort to its passengers, and the professional crew cares for the needs of customers. Most ships are equipped with cafeteria, sun deck, children playground, disabled adapted entrance, air conditioning, stabilizers, often free WI-FI service.

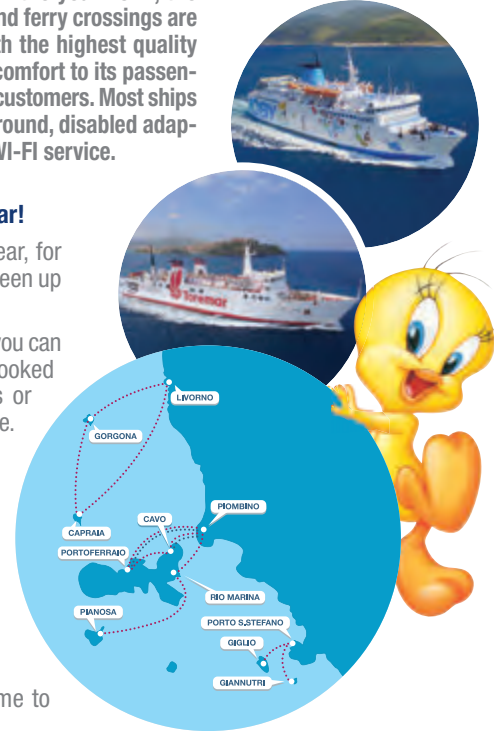
THE BRIDGE TO THE ISLE OF ELBA.
Up to 100 departures per day on 365 days of a year!
 • **Piombino-Portoferraio**, connections the whole year, for your voyage to Elba island you have the choice between up to **66 departures daily**.

DEPART EARLIER  **DEPART EARLIER** means, you can also use an earlier than booked departure by MOBY Lines or TOREMAR if space is available.

- from **Piombino to Cavo**, TOREMAR (besides the MOBY ferries) offers crossings by hydrofoil within only 20 min, a vehicle transport though is not possible.
- We also offer an all-year connection between **Piombino** and **Rio Marina**. The crossing takes only 45 minutes.

TUSCAN ARCHIPELAGO:
 • The ships of TOREMAR enable you to quickly come to the **islands of Tuscany**.

You will find the current timetable and fares on website www.moby.com, www.toremar.de





OUR PORT OFFICES

THE ELETRONIC CHECK IN HAPPENS DIRECTLY ON THE PLACE IN FRONT OF THE SHIP

GENOVA

Moby c/o Terminal Traghetto
P.le dei Traghetto Iqbal Masih 5
16126 Genova
Tel. 00390 (10) 25.41.513
Telefax 00390 (10) 25.43.916
moby.genova@moby.it
Port entrance "Varco Albertazzi"
Latitude: 44.410713
Meridian: 8.908552

It may not be driven into the port area of Varco Albertazzi earlier than 6h before departure of the booked ship, and that only with a valid ticket.

OLBIA

Moby - Unimare c/o Stazione Marittima Isola Bianca - 07026 Olbia
Tel. 00390 (789) 20.40.13
Telefax 00390 (789) 27.933
Latitude: 40.923808
Meridian: 9.52051

NICE

Ticket counter MOBY - Dock d'Entrecasteaux, Port of Nice - 06300 Nice
Tel: 0033 (492) 00.53.23
Fax: 0033 (492) 00.53.24
moby@mathezfreight.com
Latitude: 43.695099
Meridian: 7.285659

LIVORNO

Moby c/o
Embarkation:
Stazione Marittima
Tel. 00390 (586) 89.99.50
Telefax 00390 (586) 89.59.86
Piazzale del Portuale, 57123 Livorno
Latitude: 43.555214
Meridian: 10.303361

PIOMBINO

Moby c/o Stazione Marittima
Piazzale Premuda - 57025 Piombino
Embarkation to Elba
Tel. 00390 (565) 221212 - 276077
Embarkation to Sardinia
Tel. 00390 (565) 222300
Latitude: 42.930646
Meridian: 10.542804

CIVITAVECCHIA

Moby c/o Terminal
"Autostrade del Mare" interno porto
00053 Civitavecchia (RM)
Tel. 00390 (766) 35245
Telefax 00390 (766) 380021
Latitude: 42.090623
Meridian: 11.791903

BASTIA

Agence Maritime Bastiaise
Rue Cdt Luce de Casabianca, 4
20200 Bastia
Tel. 0033 (495) 34.84.94 - 34.84.90
Telefax 0033 (495) 32.17.94
Latitude: 42.703071
Meridian: 9.452315

PORTOFERRAIO

V.le Elba 12 - 57037 Portoferraio (Elba)
Tel. 00390 (565) 91.41.33
Telefax 00390 (565) 91.67.52
moby.portoferraio@moby.it
Latitude: 42.813146
Meridian: 10.322318

BONIFACIO

Port Bonifacio, Gazano
Tel. 0033 (495) 73.00.29
Telefax 0033 (495) 73.05.50
Latitude: 41.388549
Meridian: 9.156595

S. TERESA DI GALLURA

Moby c/o Port S. Teresa di Gallura
Tel. 00390 (789) 75.14.49
Latitude: 41.238792
Meridian: 9.194269

CAGLIARI

Agenave di F. Vespa -
A. Montaldo & C. S.a.s.
Molo Sanità Stazione Marittima - Porto
09125 Cagliari
Tel. +390 70666065
Telefax +390 70666067
agenave@tiscali.it
Latitude: 39.212971
Meridian: 9.110874

ARBATAX

Torchiani & C. S.a.s.
Via Venezia 10 - 08048 Tortoli
Tel. +390 782667067
Telefax +390 782667047
agtirrenia.arbatax2@tirrenia.it
Latitude: 39.93702
Meridian: 9.7075800000000007

NAPLES

Ontano Tour S.r.l.
Calata Porto di Massa (interno porto)
80100 Napoli
Tel. +390 519096
Telefax +390 815524390
agtirrenia.napoli@tirrenia.it
Latitude: 40.841272
Meridian: 14.260599

PALERMO

Compagnia Italiana di
Navigazione S.p.A.
Calata Marinali d'Italia Porto (PA)
90133 Palermo
Tel. +390 3440920924
Telefax +390 257765294
cin.palermo@tirrenia.it
Latitude: 38.128588
Meridian: 13.364332

TERMOLI

Maurino Shipping S.r.l.s.
Interno Porto - Molo di Nord Est
86039 Termoli
Tel. +390 875870301
Telefax +390 875916064
agtirrenia.termoli@tirrenia.it
Latitude: 42.00344
Meridian: 15.008043

TREMITI

Cafiero Emilio Agenzia
Via degli Abbati, 10 - 71040 Isole Tremiti
Tel. +390 882463008
Telefax +390 882463008
agtirrenia.tremiti@tirrenia.it
Latitude: 42.12028
Meridian: 15.497155

CATANIA

Tirrenia - Catania Port Service S.r.l.
Molo Crispi Banchina 8
Ed. ex Doganella - 95131 Catania
Tel. +390 0957231018
passeggeri.catania@tirrenia.it
Latitude: 37.294024
Meridian: 15.054974

MALTA

Sea Passenger Terminal Tirrenia Office
Room 80 Pinto Wharf Floriana FRN
1913 Malta
Tel. 00356022776021
tirrenia@smsmondial.com.mt
Latitude: 35.8861473
Meridian: 14.4995393



MOBY Lines Europe GmbH
Wilhelmstr. 36-38 - 65183 Wiesbaden
Tel. +49 611-1 40 20
Telefax +49 611-1 40 22 44
E-Mail: info@tirrenia.de
www.tirrenia.de

HELPDESK:

Tel. (GER) 0049 611 14020
Tel. (I) 00390 2 76028132



MOBY Lines Europe GmbH
Wilhelmstr. 36-38 - 65183 Wiesbaden
Tel. +49 611-1 40 20 - Telefax +49 611-1 40 22 44
E-Mail: info@mobyline.de www.mobyline.com

HELPDESK:

Tel. (GER) 0049 611 14020
Tel. (I) 00390 2 76028132

TIRRENIA PORT ADDRESSES

THE ELETRONIC CHECK IN HAPPENS DIRECTLY ON THE PLACE IN FRONT OF THE SHIP

GENOVA

Compagnia Italiana di
Navigazione S.p.A.
Piazzale Iqbal Masih 5 - 16126 Genova
Tel. +390 102698234
Telefax +390 102698230
passeggeri.genova@tirrenia.it
Latitude: 44.410713
Meridian: 8.908552

LIVORNO

Carlo Laviosa S.r.l.
Via Leonardo da Vinci 12
57123 Livorno
Tel. +390 586434115

Telefax +390 586405276
ufficioporto@laviosa.com
Latitude: 43.551159
Meridian: 10.301346

OLBIA

Compagnia Italiana di
Navigazione S.p.A. - Stazione Marittima
Isola Bianca - 07026 Olbia
Tel. +390 789207101
Telefax +390 789207120
passeggeri.olbia@tirrenia.it
Latitude: 40.922576
Meridian: 9.524492

CIVITAVECCHIA

Compagnia Italiana di
Navigazione S.p.A.
Terminal Autostr. Mare - Calata Flavioni
00053 Civitavecchia
Tel. +390 766581925
Telefax +390 76628804
passeggeri.civitavecchia@tirrenia.it
Latitude: 42.0982
Meridian: 11.781067

PORTO TORRES

Compagnia Italiana di
Navigazione S.p.A. - Stazione Marittima
07046 Porto Torres
Tel. +390 795181011
Telefax +390 795181013
passeggeri.portotorres@tirrenia.it
Latitude: 40.843673
Meridian: 8.401324



Toremor PORT ADDRESSES

THE ELETRONIC CHECK IN HAPPENS DIRECTLY ON THE PLACE IN FRONT OF THE SHIP

LIVORNO

Via del Molo Mediceo 12
57123 Livorno
Tel. +390 586.896113
Telefax +390 586.896113
Latitude: 43.548262
Meridian: 10.302441

CAPRAIA

Via Assunzione 18 - 57032 Capraia
Tel. +390 586.905069
Telefax +390 586.905069
Latitude: 43.05154
Meridian: 9.836282

PIOMBINO

Nuova Stazione Marittima
57025 Piombino
Tel. +390 565.31100 - 565.226590
Telefax +390 565.35294
Latitude: 42.930646
Meridian: 10.542804

CAVO

Via Michelangelo 54 - 57030 Cavo
Tel. +390 565.949871
Telefax +390 565.949871
Latitude: 42.858771
Meridian: 10.422299

PORTOFERRAIO

Calata Italia 36 - 57037 Portoferraio
Tel. +390 565.918080
Telefax +390 565.914717
Latitude: 42.813146
Meridian: 10.322318

PORTO SANTO STEFANO

Piazza Facchinetti 7/8
58019 Porto Santo Stefano
Tel. +390 564.810803
Telefax +390 564.818455
Latitude: 42.43453
Meridian: 11.121792

RIO MARINA

Calata Voltoni 20 - 57038 Rio Marina
Tel. +390 565.962073
Telefax +390 565.962568
Latitude: 42.81589
Meridian: 10.42828

CIGLIO

Giglio Porto - 58013 Giglio
Tel. +390 564.809349
Telefax +390 564.809349
Latitude: 42.359366
Meridian: 10.920926



MOBY Lines Europe GmbH
Wilhelmstr. 36-38 - 65183 Wiesbaden
Tel. +49 611-1 40 20
Telefax +49 611-1 40 22 44
E-Mail: info@mobyline.de
www.toremor.de

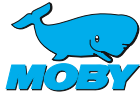
HELPDESK:

Tel. (GER) 0049 611 14020
Tel. (I) 00390 2 76028132

SPECIAL CHARACTER/DEFINITION OF THE VEHICLE LENGTH AND HEIGHT

We need the dimensions over all of each vehicle.

PLEASE NOTE THE RESPECTIVE CONDITIONS.



The booking can only happen for 1 motorized vehicle with driver and fellow travelers, further vehicles with min. 1 driver must be booked separate.

Categories (further information see general terms of transport and price lists).

- **Car cat. 1:** valid only for motorcycles with sidecars, quads, trikes or cars up to 4 m long and 2,20 m high.
- **Car cat. 2:** valid only for cars from 4 up to 5 m long and 2,20 m high and up to 1,85 m wide.
- **Van cat. 3:** valid only for cars, Van, Jeep, SUV up to 5 m long and 2,20 m high, but larger than 1,85 m.

Car cat. 1-3: Over-height* is permitted only for baggage on roof! Empty or charged vehicles of all kind foreseen for the transport of goods are regarded as special vehicle. In case of bicycle transport see "Bicycles". Special rates "Best Offer" applicable due to availability.

- **Special vehicles cat. 9, 9C:** applicable to minibuses from 9 seats, pick-ups, campers, caravans, trailers and all other cars over 5 m long. Delivery trucks and transport vehicles and empty or charged vehicles foreseen for the transport of goods, are bookable with length max 6 m - passing this length, these vehicles must be booked directly in Italy as freight.

- **Camper, caravan:** the description "Space in garage - closed deck" means that a stay in the vehicle during the crossing is not possible. This also applies to the special tariff Camper Pex. Even here a stay is not allowed in the vehicle during the crossing. Only if you book a crossing with description "Camping on board", a stay in your vehicle during the crossing is possible.

- **Bicycles:** bicycles can be parked in the garage against payment. If bicycles are transported on a rear baggage carrier this total length has to be considered choosing the car category. Transporting them on a roof baggage carrier, over-height surcharge is applied from 2,21 m total car height. Attention: that's why some special rates are not applicable.

* **Over-height:** an over-height surcharge will be applied (if not otherwise specified) for all cars from 2,21 m height and possibly roof baggage/bicycles over 2,20 m total height. For example, special tariff "Best Offer" with over-height not applicable.



Bookings up to max 9 passengers and with up to 4 vehicles are possible.

Categories (further information see general terms of transport and price lists).

- **Car up to 4 m length.**
- **Car from 4-5 m length.**
- **Car up to 5 m length, wider than 1,85 m - high max. 2,20m.**
- **Motorbike, moped** (incl. Quad).
- **Sidecar.**
- ***Car longer than 5 m,** SUV, Pick-up etc. Calculation based on meters in length.
- ***Minibus, camper, caravan, trailer.** Cal-

ulation based on meters in length, incl. shaft, tow bar etc. (Min. 2 m length).

- ***Transporter up to 6m.** Calculation based on meters. Transporters longer than 6 m or other vehicles intended for commercial use (e. g. cooling vehicles, lorries) must be booked by the freight offices, see general terms of transport art. 31.

- ***Camping on Bord** - only camper and cars with caravan; calculation based on meters in length, incl. shaft, tow bar or other elements (min. 4,5 m length).
- **Bikes,** vehicle attached or in the garage.
- **Other items carried along** canoe/surfboard, little boat.

* **At calculation of the meters in length, it is rounded up or down to 0,50 meters depending on the length lying below or over 25 cm.**



The booking can happen only for 1 motorized vehicle with driver and fellow travelers, further vehicles with min. 1 driver must be booked apart.

Categories (further information see general terms of transport and price lists).

- **T1: Car up to 3,5 m length** (incl. Quad-vehicles/motor bikes with sidecars).
- **T2: Car from 3,51 m up to 4,00m length.**
- **T3: Car from 4,01 m up to 4,50m length.**
- **T5: Car longer 4,5 m length.**
- **T6: Bike** in garage.
- **TH: Car more than 1,8 m high,** e. g. with bike or other items on the roof.
- **TM: Motorbike, moped up to 250 cm³.**
- **TM1: Motorbike, moped more than 250 cm³.**
- **T9A: Camper up to 6 m.**
- **T9B: Camper more than 6 m.**
- **T9C: Minibus.**
- **TRR: Trailer** (length min. 2 m).
- **TRO: Caravan.**

Vehicles intended for commercial use must be booked in Italy directly as freight.

RESERVATION CENTER FOR EUROPE



MOBY- TIRRENIA - TOREMAR

MOBY Lines Europe GmbH
Wilhelmstr. 36-38 - 65183 Wiesbaden
Tel. +49 611-1 40 20 - Telefax +49 611-1 40 22 44
E-Mail: info@mobyline.de - info@tirrenia.de
www.mobyline.com - www.tirrenia.de - www.toremard.de



THE GENERAL TERMS OF TRANSPORT OF THE RESPECTIVE FERRY COMPANIES MAY BE FOUND ON OUR WEBSITE
www.mobyline.com; www.tirrenia.de; www.toremard.de

PROCUREMENT CLAUSE: MOBY Lines Europe GmbH, Wilhelmstrasse 36-38, 65183 Wiesbaden, Germany is merely responsible for the procurement of shipments to the transport company MOBY S.p.A. with registered office in Largo Augusto 8, 20122 Milano, Italy, and/or TOREMAR, Toscana Regionale Marittima S.p.A., registered office Piazzale dei Marmi 12 - 57123 Livorno, Italy, and/or Tirrenia, Compagnia Italiana di Navigazione S.p.A., registered office Via Sassari, 3 CAP 09123 CAGLIARI, Italy. Thus, the parties actually entering

the contract are the passenger and the transport company Moby S.p.A and/or Toremar and/or Tirrenia. For shipping, only MOBY S.p.A.s and/or Toremars and or Tirrenias general terms of transportation for the transport of passengers with and without vehicle apply in their respective valid version. MOBY Lines Europe GmbH, Wiesbaden, Germany assumes responsibility exclusively for proper receipt and processing of the orders. MOBY Lines Europe GmbH, Wiesbaden is not liable for the execution of the transportation contract.

WE ASSURE YOU A LOVELY HOLIDAY!



TRAVEL CANCELLATION COSTS INSURANCE

can be booked a maximum of 21 days after booking the trip, for reservations departing within 30 days the insurance must be taken out at time of booking.



PREMIUM PER VEHICLE*

Long ride:
Simple crossing 9 € / leaving and return 12 €

Short ride:
Simple crossing 4 € / leaving and return 6 €

*Vehicle trains (e.g. car with caravans) are counted as one vehicle.

Additional insurance (only for German nationals) can be booked at www.mobyline.com. There, you will also find the insurance conditions.

- contractual cancellation costs with non-departure through unexpected serious illness, serious accident or death
- the above mentioned events additional outward journey costs, if due to departure is delayed
- additionally, unemployment after termination for operational reasons and reemployment after unemployment is regarded as insured
- Excess: if occurrence of the event insured is brought on by an unexpected serious illness with out-patient treatment, excess amounts to 20% of the recoverable amount, however at least € 25 per vehicle or vehicle trains insured. No excess in all other cases.



THE MOBY PREMIUM PROGRAM ACCOMPANYING YOU THE WHOLE YEAR!

To reward the loyalty of our guests, we offer the MOBY CARD to you. You may register for the prime program and get points for each MOBY crossing. Report your MOBY CARD number on board of a MOBY ferry in the restaurant, self-

service restaurant, at the bar and in the shops and you can collect points there as well. Then you can convert them into a MOBY coupon and apply it as a reduction for your next crossing with MOBY to your selected destination. As owner of a MOBY CARD you can book easier, resend tickets and change your booking until 24h before departures according to the booking conditions. Simply register on the internet: www.mobyline.com.

RESERVATION CENTER FOR EUROPE

MOBY - TIRRENIA - TOREMAR



MOBY Lines Europe GmbH
Wilhelmstr. 36-38 - 65183 Wiesbaden
Tel. +49 611-14020 - Telefax +49 611-1402244
E-Mail: info@mobyhines.de - info@tirrenia.de
www.mobyhines.com
www.tirrenia.de
www.toremarm.de



IN THE BEST TRAVEL AGENCIES:

MOBY...ON LINE: www.mobyhines.com
www.mobyhines.de - www.mobyhines.pl
www.mobyhines.se - www.mobyhines.cz
TIRRENIA...ON LINE: www.tirrenia.de
TOREMAR...ON LINE: www.toremarm.de